

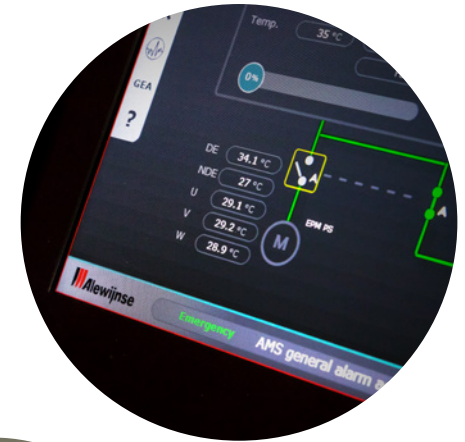
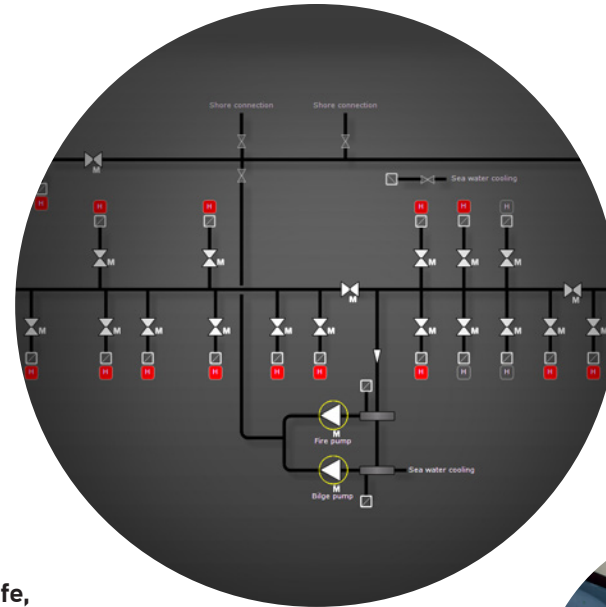
A photograph of a ship's bridge with multiple navigation monitors and a person's hand on a control knob. A semi-transparent blue box is overlaid on the left side of the image, containing the text 'Alarm & monitoring solutions'. A white network diagram is overlaid on the entire image.

Alarm & monitoring solutions

Safe and efficient operations

Reliable, functional and intuitive

Alewijnse, your partner in high-end alarm and monitoring systems for safe, fast, efficient and versatile operations of the machinery and other related equipment on board.



About AMCS

Alewijnse is presenting its next generation of alarm, monitoring and control system (AMCS), taking full advantage of the latest advances in software and hardware to deliver systems that set new standards of speed, reliability and versatility.

The latest high-end PLC architecture, together with an all-new, next generation, graphical user interface that is faster and more fluent, makes the AMCS even easier to navigate and highly customizable.

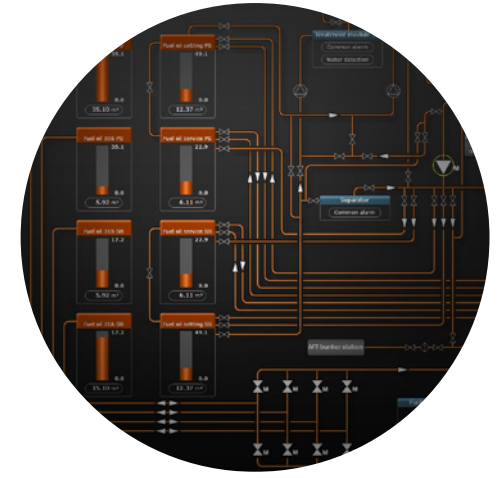
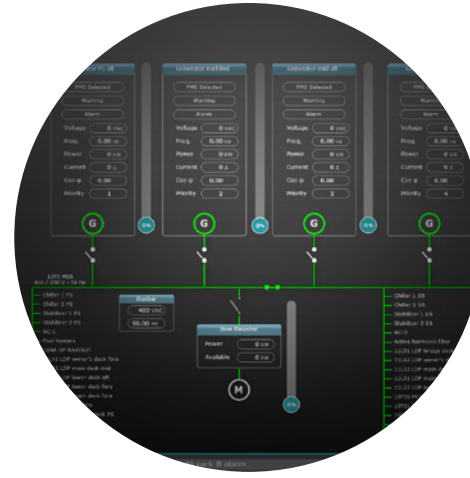
Users benefit from the most reliable, innovative and flexible systems yet, that are also ideal for marine environments and which use components that are supported by a worldwide service network.

About Alewijnse

We are a leading system integrator of electrical and automation systems in the global maritime industry. Working in partnerships with our customers and suppliers, we offer a comprehensive range of technical solutions. These include electrical installations, power distribution, propulsion systems, vessel and process automation, audio, video & IT, Lighting en Lighting Control, safety & security and navigation & communications.

Delivering innovative, cost-effective and sustainable solutions with a high level of availability, we work on a great number of vessels, superyachts, naval & governmental vessels and dredging, offshore and transport every year in new build, refit and service.

Our employees work fast, are competent, flexible and resources are backed up more than 130 years of experience. To be able to serve you 24/7 around the globe we have a worldwide network of branches, representative offices and strategic alliances.

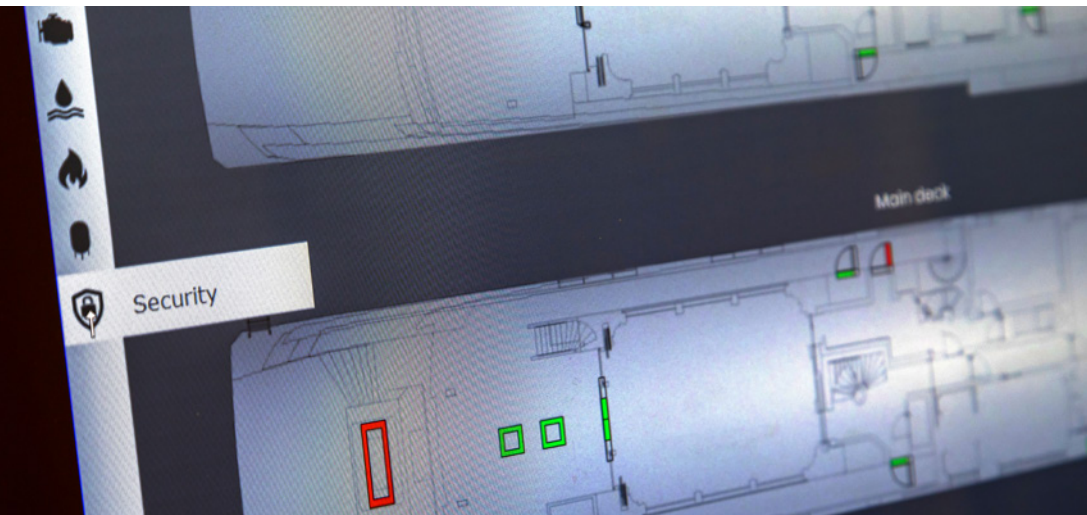


→ Client benefits

- Made-to-measure, meeting your needs in every way
- User-friendly and easy to
- Seamless interface with other Alewijnse systems
- Reliable and high-end PLC based architecture
- Extensive functionality of logging parameters
- Expandable with other modules and functions
- Interfaces possible with a wide variety of suppliers and protocols

→ Our services

- Fast, reliable and effective alarm and monitoring systems for safe and efficient operations
- State-of-the-art graphics and high-end hardware
- From standalone product to integrated platform management system
- Suitable for all vessel sizes and markets



WeDesign. WeEngineer. WeBuild. WeService.



Scan to visit website



Our goal is to co-create value with and for our customers and partners. We aim to develop and improve electrification and automation solutions which are innovative, sustainable and of the highest quality. We focus on making a valuable contribution to successful projects in the maritime and industrial sectors.

(Headquarters)
Energieweg 44
6541 CX Nijmegen
The Netherlands

T +31 (0)24 371 6100
T +31 (0)622 509 009 (24/7 Service)
info@alewijnse.com
www.alewijnse.com

WeConnect.